

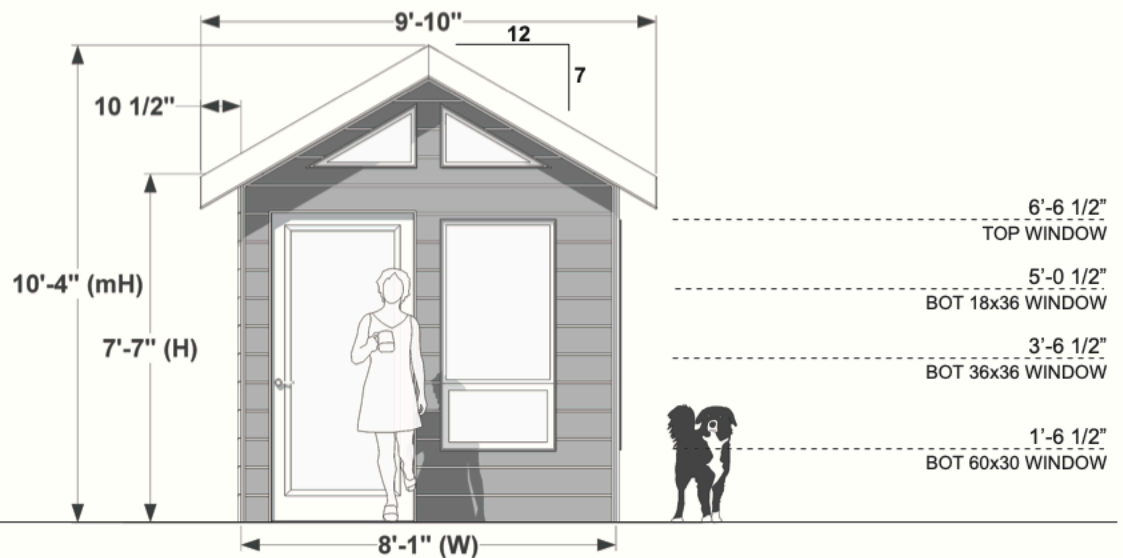
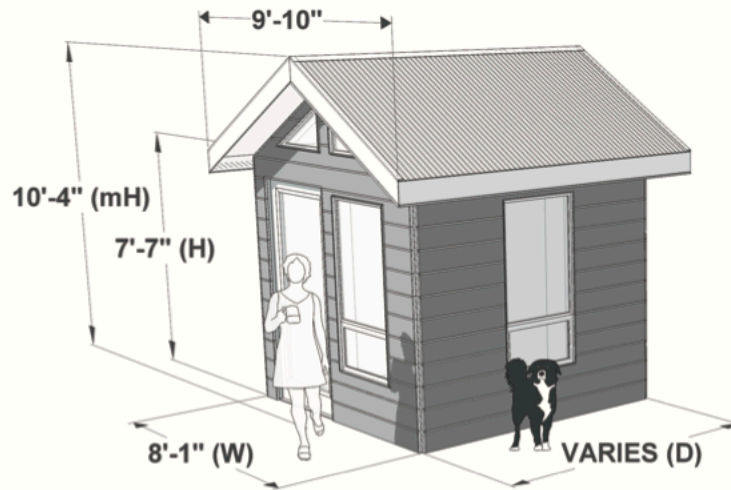
PRODUCT GUIDE

PORTLAND SERIES SHEDS

v2 - JULY, 2020

PORTLAND SERIES SIZES AND DIMENSIONS:

8' WIDE SHEDS	1.0
10' WIDE SHEDS	2.0
12' WIDE SHEDS	3.0
14' WIDE SHEDS	4.0
16' WIDE SHEDS	5.0



(D) = SHED DEPTH | (W) = SHED WIDTH | (mH) = MAX ROOF HEIGHT | (H) = SIDE WALL HEIGHT

8' PORTLAND SERIES

2x4 wall construction

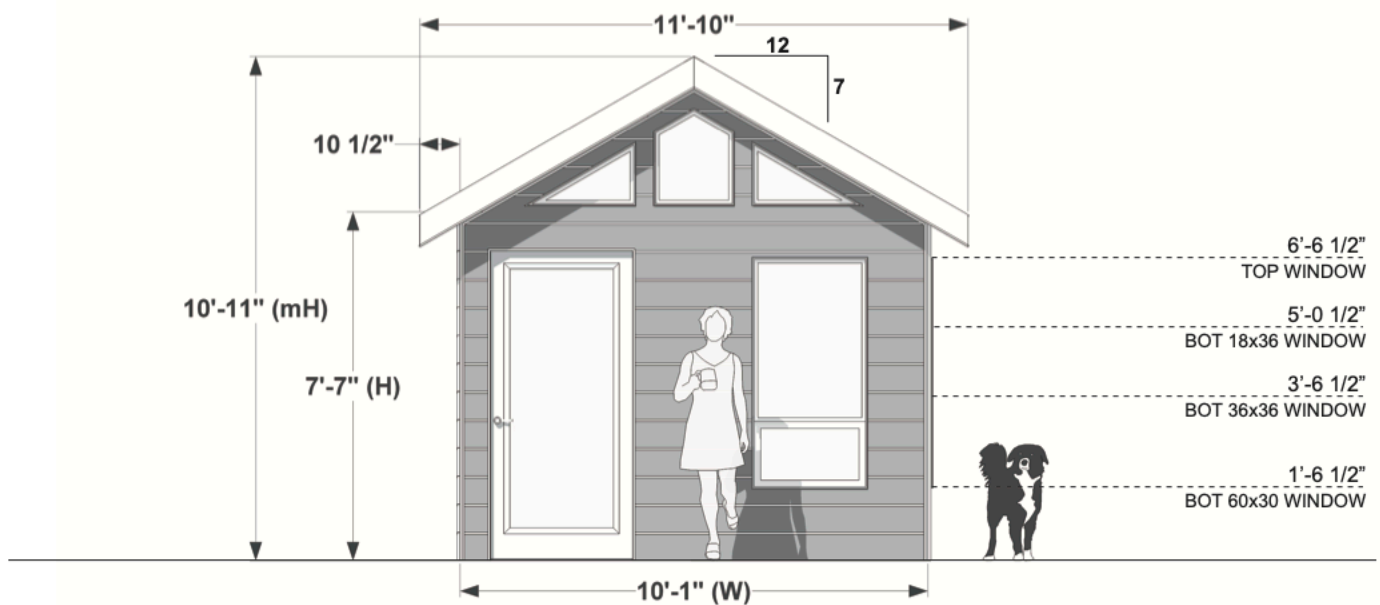
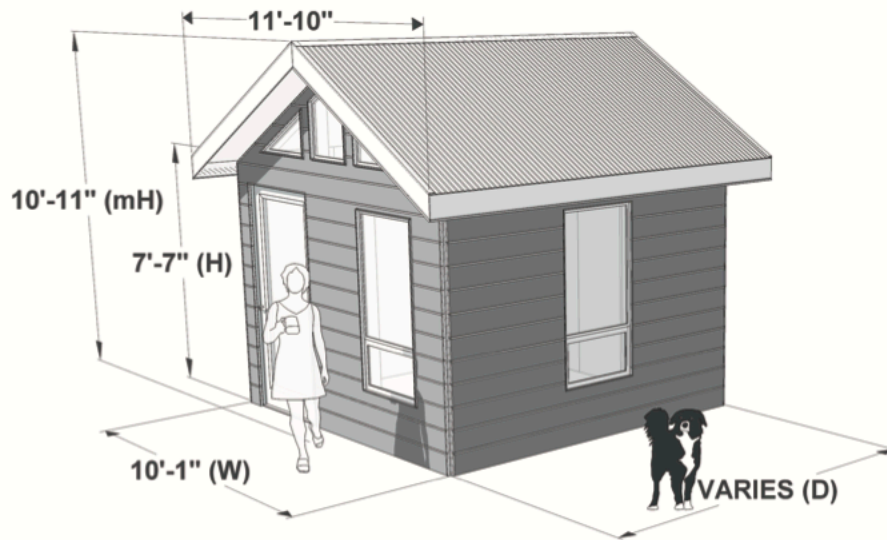
2x8 roof @ 30 psf snow load

D	W	mH	H	FOUNDATION (SQ FT)	INTERIOR (SQ FT)	WEIGHT
8'-1"	8'-1"	10'-4"	7'-7"	64	54	1792

*Height dimensions DO NOT include foundation

*Dimensions rounded to nearest inch

*Weights are approximate and will vary by shed configuration



(D) = SHED DEPTH | (W) = SHED WIDTH | (mH) = MAX ROOF HEIGHT | (H) = SIDE WALL HEIGHT

10' PORTLAND SERIES

2x4 wall construction

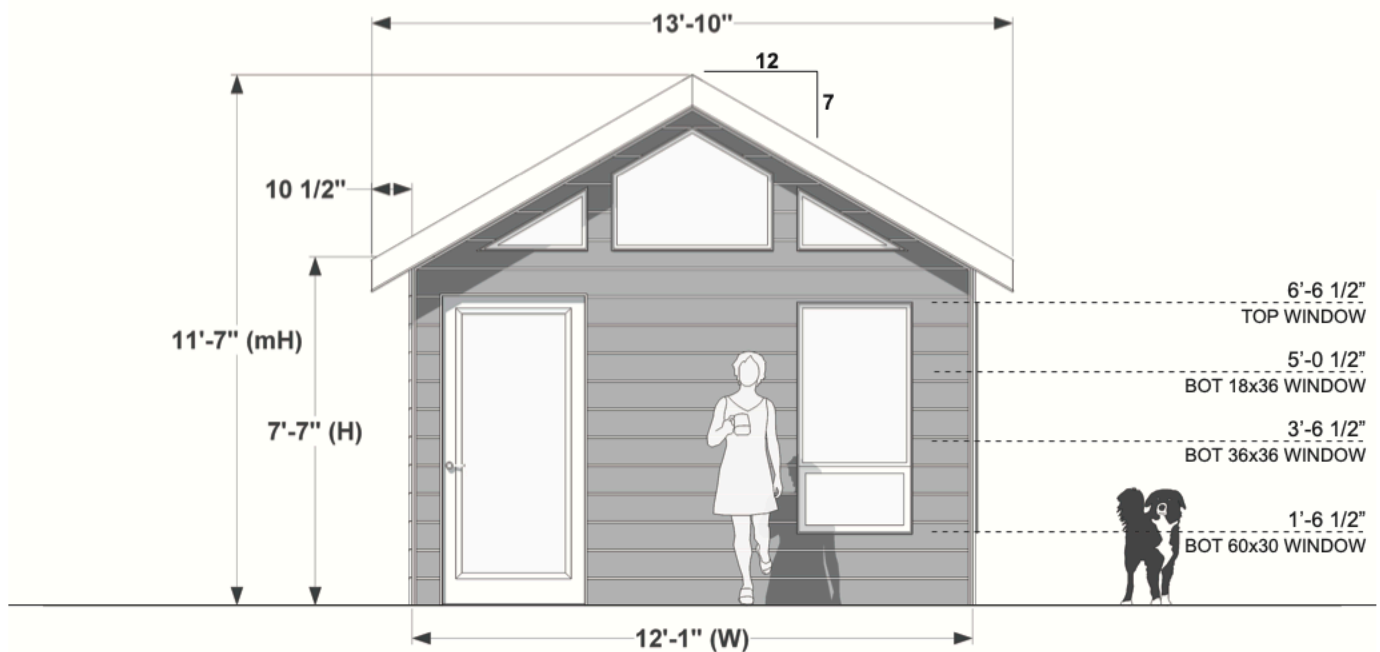
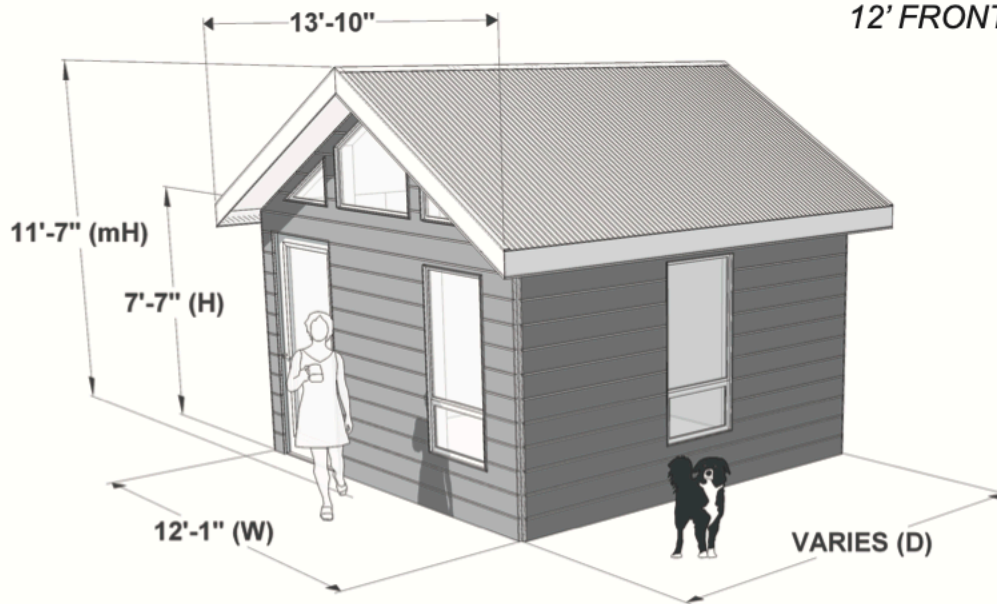
2x8 roof @ 30 psf snow load

D	W	mH	H	FOUNDATION (SQ FT)	INTERIOR (SQ FT)	WEIGHT
8'-1"	10'-1"	10'-11"	7'-7"	80	68	2240
10'-1"	10'-1"	10'-11"	7'-7"	100	87	2800

*Height dimensions DO NOT include foundation

*Dimensions rounded to nearest inch

*Weights are approximate and will vary by shed configuration



(D) = SHED DEPTH | (W) = SHED WIDTH | (mH) = MAX ROOF HEIGHT | (H) = SIDE WALL HEIGHT

12' PORTLAND SERIES

2x4 wall construction

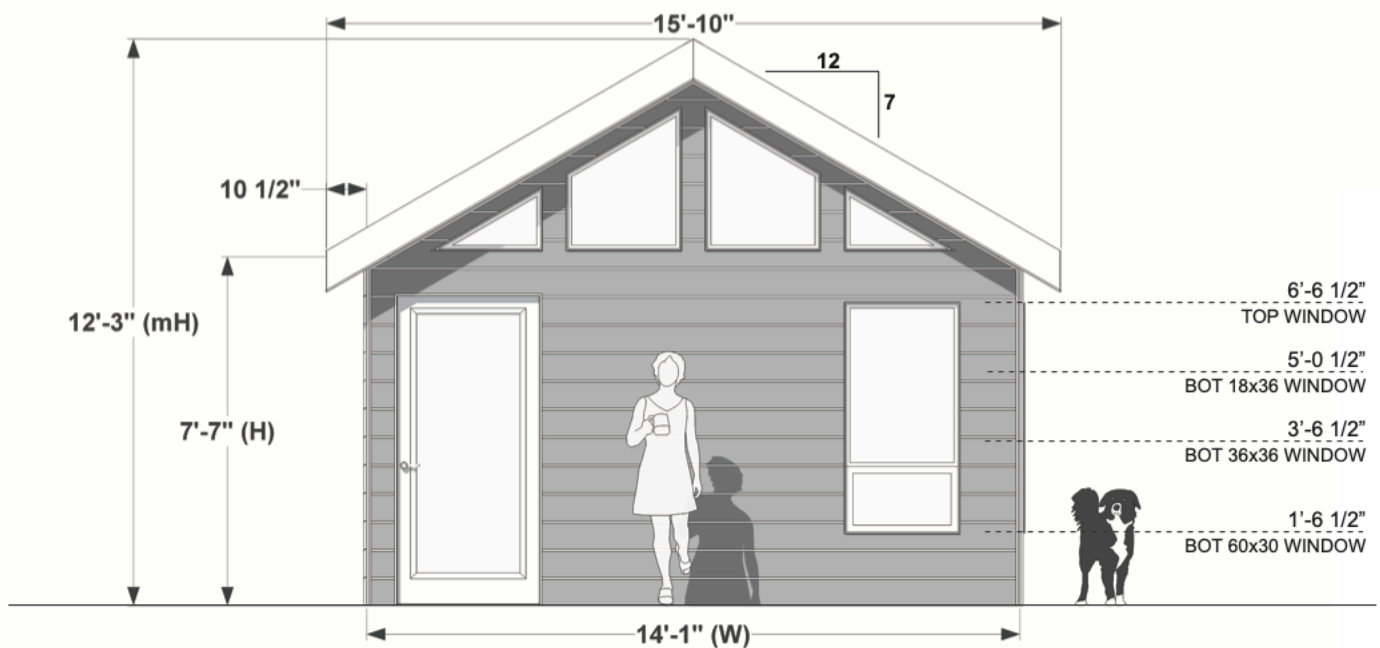
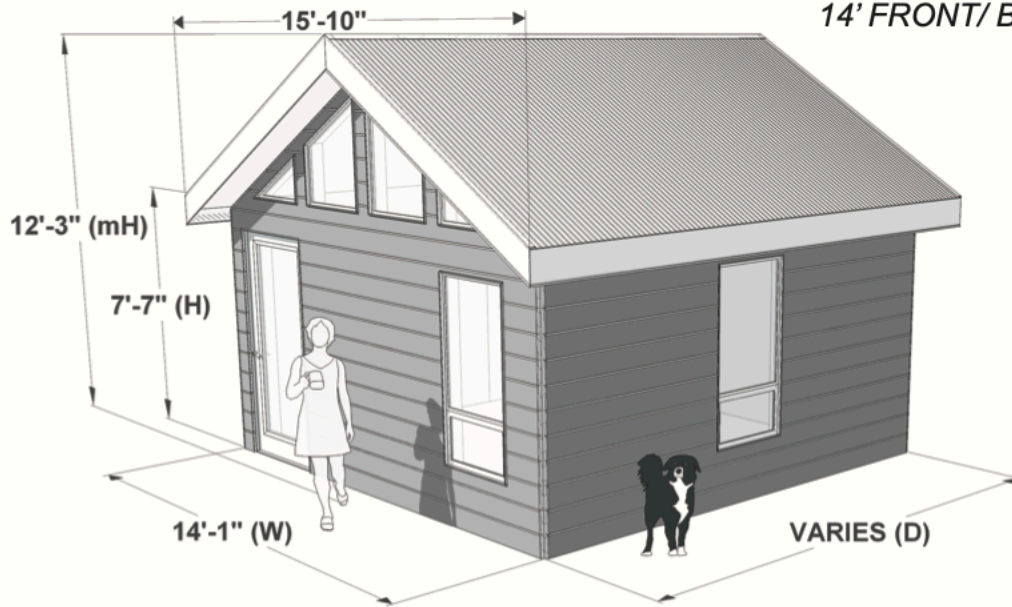
2x8 roof @ 30 psf snow load

D	W	mH	H	FOUNDATION (SQ FT)	INTERIOR (SQ FT)	WEIGHT
8'-1"	12'-1"	11'-6"	7'-7"	96	83	2688
10'-1"	12'-1"	11'-6"	7'-7"	120	106	3360
12'-1"	12'-1"	11'-6"	7'-7"	144	128	4032

*Height dimensions DO NOT include foundation

*Dimensions rounded to nearest inch

*Weights are approximate and will vary by shed configuration

14' FRONT/BACK SIZES


(D) = SHED DEPTH | (W) = SHED WIDTH | (mH) = MAX ROOF HEIGHT | (H) = SIDE WALL HEIGHT

14' PORTLAND SERIES

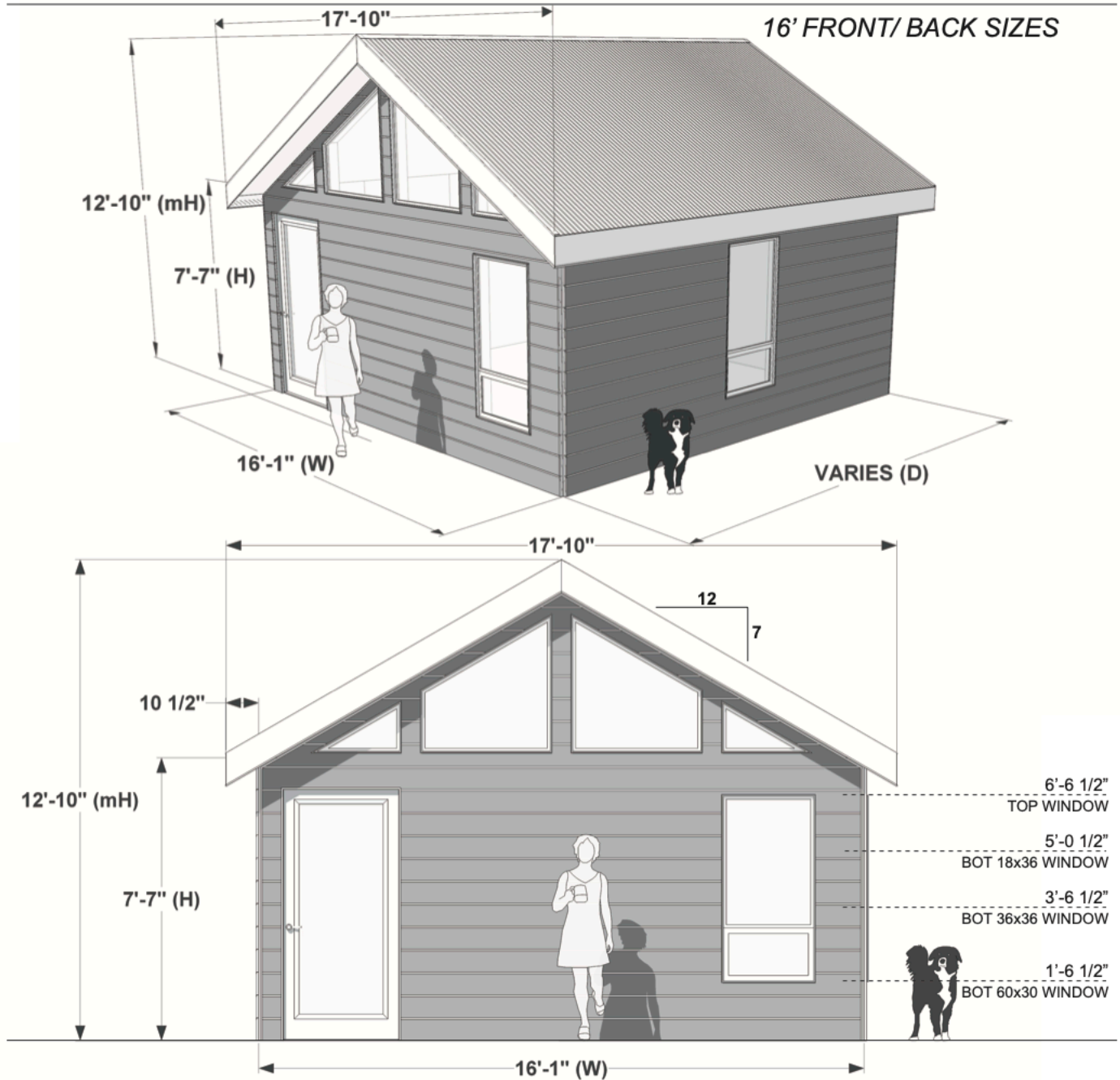
2x4 or 2x6 wall construction
2x8 roof @ 30 psf snow load

D	W	mH	H	FOUNDATION (SQ FT)	INTERIOR (SQ FT)	WEIGHT
8'-1"	14'-1"	12'-3"	7'-7"	112	93	3136
10'-1"	14'-1"	12'-3"	7'-7"	140	120	3920
12'-1"	14'-1"	12'-3"	7'-7"	168	147	4704
14'-1"	14'-1"	12'-3"	7'-7"	196	173	5488

*Height dimensions DO NOT include foundation

*Dimensions rounded to nearest inch

*Weights are approximate and will vary by shed configuration



(D) = SHED DEPTH | (W) = SHED WIDTH | (mH) = MAX ROOF HEIGHT | (H) = SIDE WALL HEIGHT

16' PORTLAND SERIES

2x4 or 2x6 wall construction
2x8 roof @ 30 psf snow load

D	W	mH	H	FOUNDATION (SQ FT)	INTERIOR (SQ FT)	WEIGHT
8'-1"	16'-1"	12'-10"	7'-7"	128	110	3584
10'-1"	16'-1"	12'-10"	7'-7"	160	140	4480
12'-1"	16'-1"	12'-10"	7'-7"	192	170	5376
14'-1"	16'-1"	12'-10"	7'-7"	224	200	6272
16'-1"	16'-1"	12'-10"	7'-7"	256	230	7168

*Height dimensions DO NOT include foundation

*Dimensions rounded to nearest inch

*Weights are approximate and will vary by shed configuration